



# RcX Clamp



# RIX Retaining Clamp

RIX is our light retaining type clamp for fixing of pipes, hoses and cables.

Due to a thick rubber profile it is very good to dampen vibrations and other movements.

The RIX is available in 12 mm bandwidth, and several materials from zink plate to different stainless steel grades so you can find the perfect combination to fulfill the requirement of the application. Different type of materials in the rubber profile such silicone, EPDM, PP is available as option, especially if in contact with oil, high temperature or need of special characteristics. Standard is EPDM.

Ideal applications are in automotive, marine, hydraulic and industry.



## Bandwidth 12 mm

Clamping diameter	W1	W4	W5	Packaging Size	Part. No
3	★			100	1941000003
4	★			100	1941000004
5	★			100	1941000005
6	★			100	1941000006
7	☆			100	1941000007
8	★			100	1941000008
9	☆			100	1941000009
10	★			100	1941000010
11	☆			100	1941000011
12	★			100	1941000012
13	★			100	1941000013
14	★			100	1941000014
15	☆			100	1941000015
16	★			100	1941000016
17	☆			100	1941000017
18	★			100	1941000018
19	★			100	1941000019
20	☆			100	1941000020
21	★			100	1941000021
22	★			100	1941000022

Clamping diameter	W1	W4	W5	Packaging Size	Part. No
23	☆			100	1941000023
24	☆			100	1941000024
25	★			100	1941000025
26	☆			100	1941000026
27	★			100	1941000027
28	★			100	1941000028
29	★			100	1941000029
30	★			100	1941000030
31	☆			100	1941000031
32	★			100	1941000032
33	☆			100	1941000033
34	☆			100	1941000034
35	★			100	1941000035
36	☆			100	1941000036
37	☆			100	1941000037
38	☆			100	1941000038
39	☆			100	1941000039
40	★			100	1941000040

- ★ Standard
- ☆ On request

# RsX DIN Retaining Clamp

RsX is our strong retaining type clamp for fixing of pipes, hoses and cables, complying with DIN 3016.

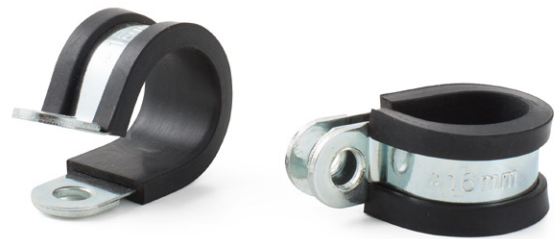
Due to a thick rubber profile it is very good to dampen vibrations and other movements.

The RsX is available in 9, 12, 15, 20, 25 mm bandwidth, and several materials from zinc plate to different stainless steel grades so you can find the perfect combination to fulfill the requirement of the application.

The bolt holes are reinforced with an extra plate to better resist vibrations.

Different type of materials in the rubber profile such as silicone, EPDM, PP is available as an option, especially if in contact with oil, high temperature or need of special characteristics. Standard is EPDM.

Ideal applications are in automotive, train, aviation, marine, hydraulic and industry.



## Bandwidth 12 mm (9, 15, 20 & 25 mm available on request)

Clamping diameter	W1	W4	W5	Packaging Size	Part. No*
3	★		☆	100	194X200003
4	★		☆	100	194X200004
5	★		☆	100	194X200005
6	★		☆	100	194X200006
7	☆		☆	100	194X200007
8	★		★	100	194X200008
9	★		☆	100	194X200009
10	★		☆	100	194X200010
11	☆		☆	100	194X200011
12	★		★	100	194X200012
13	☆		☆	100	194X200013
14	★		☆	100	194X200014
15	★		☆	100	194X200015
16	★		☆	100	194X200016
17	☆		☆	100	194X200017
18	★		☆	100	194X200018
19	★		☆	100	194X200019
20	★		☆	100	194X200020
21	☆		☆	100	194X200021
22	★		☆	100	194X200022

Clamping diameter	W1	W4	W5	Packaging Size	Part. No*
23	☆		☆	100	194X200023
24	☆		☆	100	194X200024
25	★		★	100	194X200025
26	★		☆	100	194X200026
27	☆		☆	100	194X200027
28	★		☆	100	194X200028
29	☆		☆	100	194X200029
30	★		☆	100	194X200030
31	☆		☆	100	194X200031
32	☆		☆	100	194X200032
33	★		☆	100	194X200033
34	☆		☆	100	194X200034
35	★		☆	100	194X200035
36	☆		☆	100	194X200036
37	☆		☆	100	194X200037
38	☆		☆	100	194X200038
39	☆		☆	100	194X200039
40	★		☆	100	194X200040

★ Standard

☆ On request

\* replace X with material no (1, 4, 5)

# CCT House Scandinavia AB

With a long experience in the clamping & connecting industry and cooperations with global actors, CCT House understood that in today's rapid changing market, there was a need of a partner that really could supply the right parts for the customer's needs. And sometimes there is a need of unconventional products that has not even been produced before. That's why CCT House not only supplies what we produce. Having different levels of quality/performance for better complying with the asked performance, helps our customer to do significant cost savings and get the right product for each application. With that said, we do not compromise with the product quality itself, all of our products are produced according to ISO9000/ISOTS16949 and comply with relevant standards. You can really trust that CCT House always deliver the right quality and performance level.

CCT House have the widest range of clamping and connecting products for almost all levels of demand. Products that fulfill the customers requirements with the right performance level and at the same time, save costs without risk of getting low quality.

Contact us, our team is ready to serve you.

